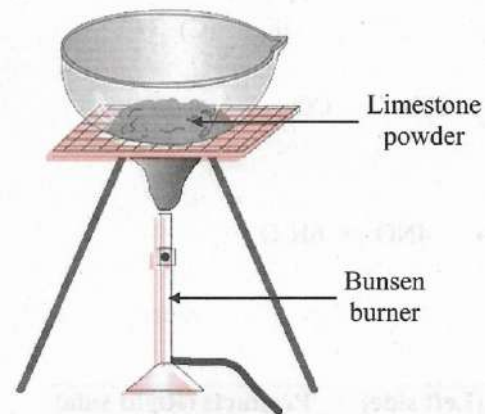
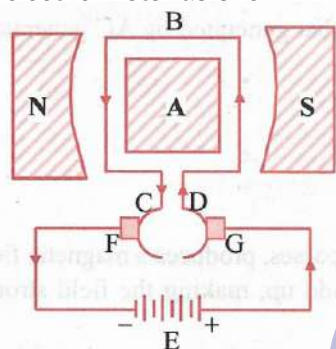


Q.9 Study the following figure and answer the questions below.

- What will be the color of the compound that will remain in the evaporating dish after the reaction?
- Name the type of chemical reaction that occurs.
- Write balanced chemical equation for this reaction.



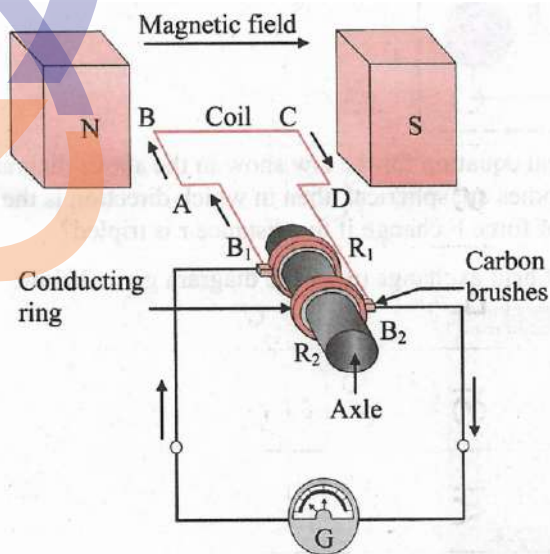
Q.10 For an electric motor as shown in the figure:



- Label A, B, C, D, E, F and G.
- What is the function of C and D?
- State uses of F and G.

Q.11 Observe the following diagram and answer the questions.

- Construction of which equipment does the above diagram shows?
- On which principle does the above equipment work?
- Explain the flow of current in external circuit, when the current in the loop is in direction A B C D.
- Explain the flow of current in external circuit, when the current in the loop is in direction D C B A.
- State the use of carbon brushes.



Q.12 Study the diagram of the lake in cold region after heavy ice fall given below and write the temperature observed at point X and point Y.

